



Community
Meeting:
**Route 93 / 38 / 28
Traffic Crashes**

City of Somerville
Massachusetts

Mayor Joseph A.
Curtatone

George Proakis
Executive Director, OSPCD

Brad Rawson
Director, Mobility Division



WORLD DAY OF REMEMBANCE: NOVEMBER 17th, 2019



For more information, see [Massachusetts Vision Zero Network](#)

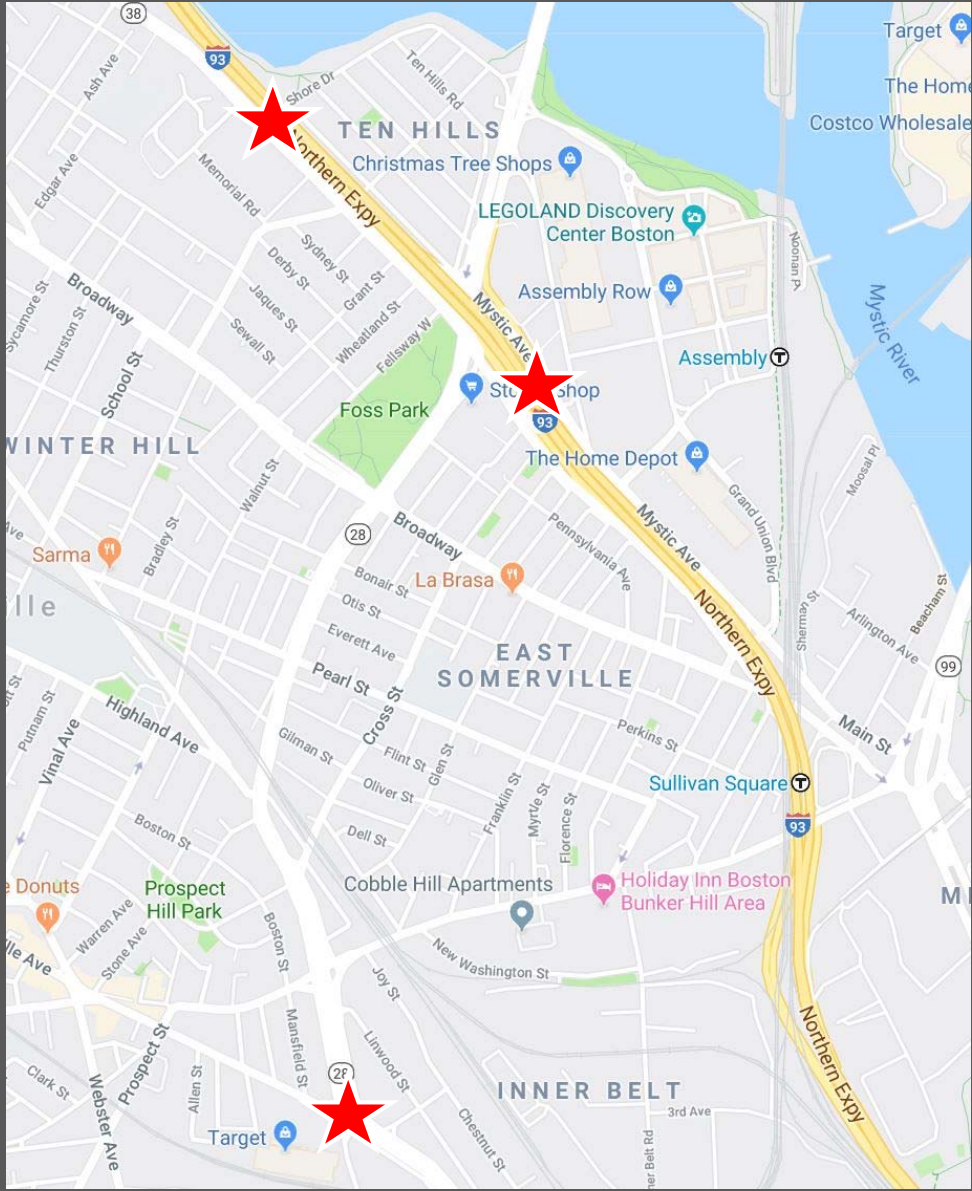
HOUSEKEEPING ITEMS:

- The City of Somerville works in partnership with the Massachusetts Department of Transportation (MassDOT) to improve safety on and around state-owned roads in Somerville
- City transportation policy is to:
 - Work to eliminate crashes that result in severe injury or fatality;
 - Reduce vehicle miles travelled (VMT)
- Crash investigations are still underway and we do not have all the facts yet
- These issues are often emotional and controversial. Community meetings will maintain a respectful environment for all participants.

Crash Location #1: Kensington Connector

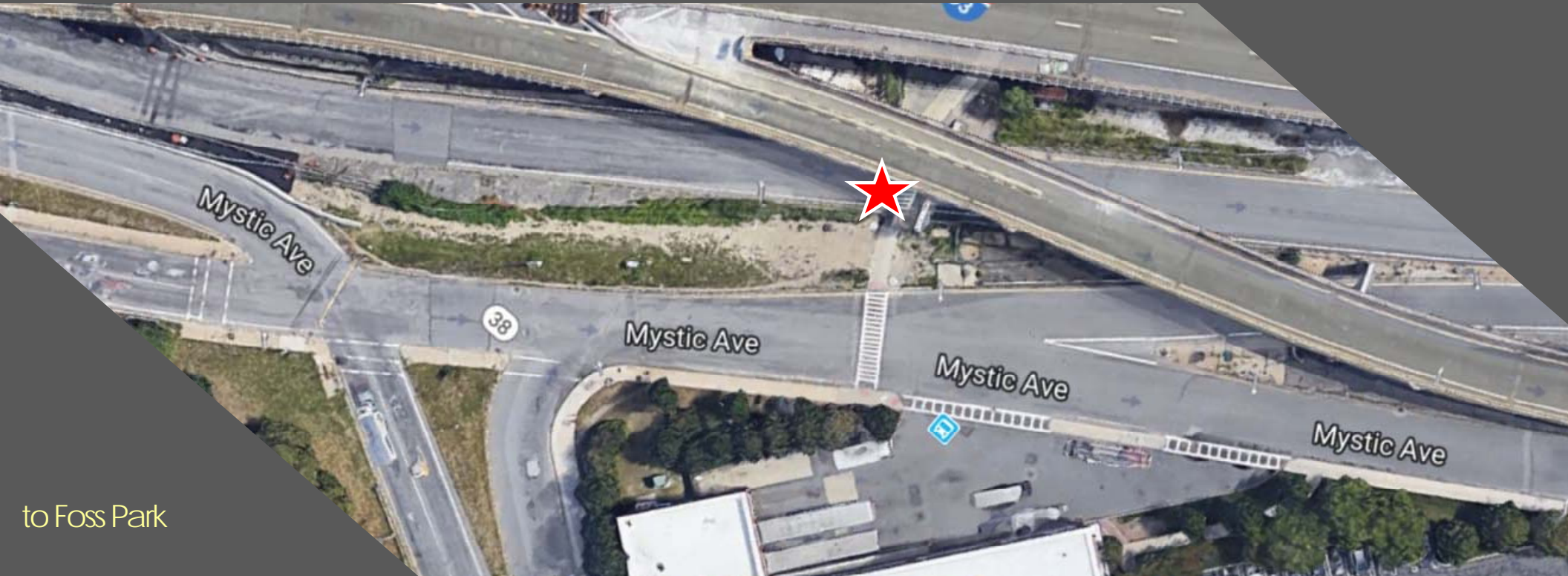
Crash Location #2: Route 38 at Shore Drive

Crash Location #3: McGrath / Medford



Crash Location #1: Kensington Connector

to Assembly Square



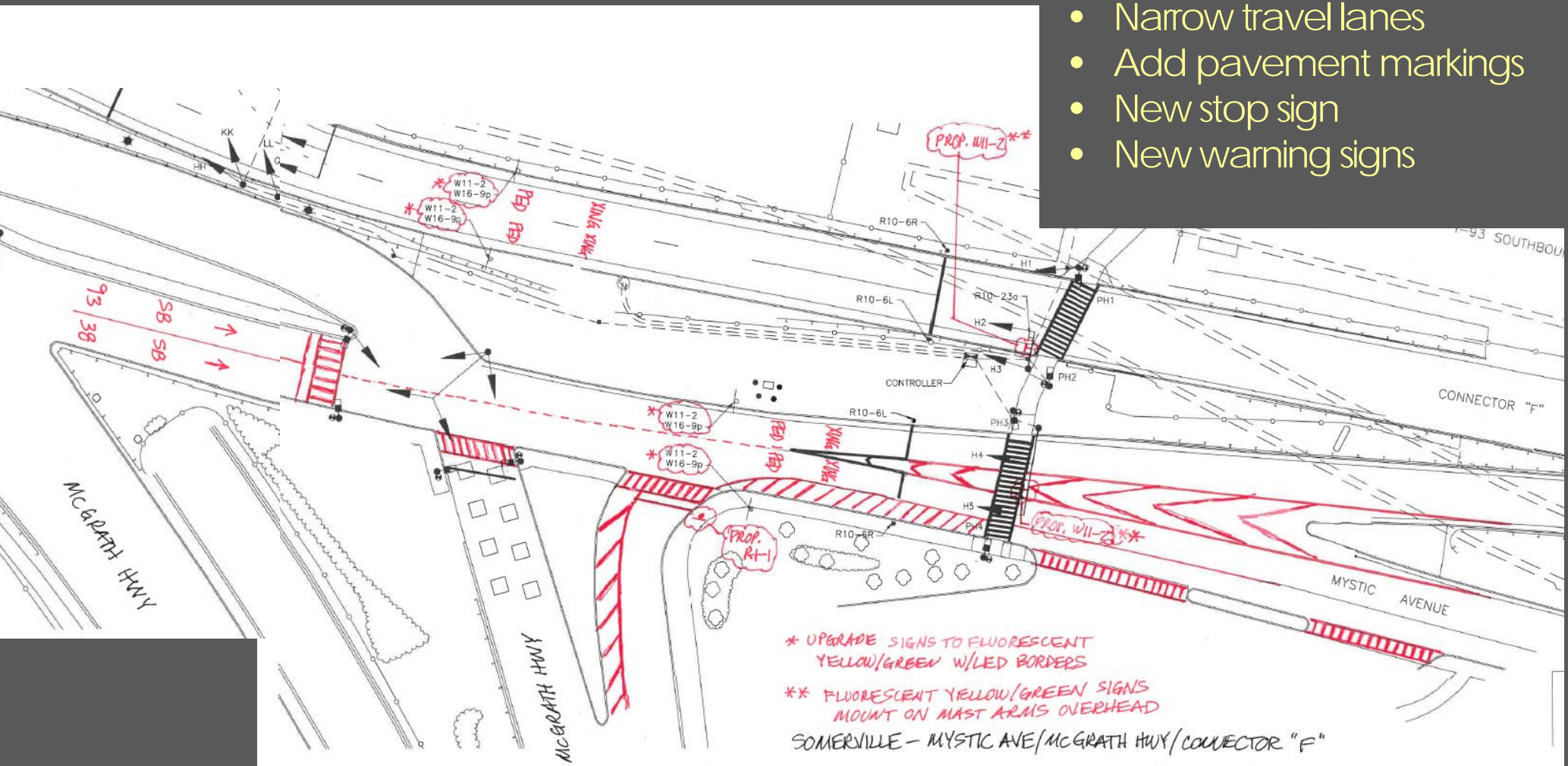
to Foss Park

Stop & Shop

Crash Location #1: Kensington Connector

Post-Crash Interim Measures

- Narrow travel lanes
- Add pavement markings
- New stop sign
- New warning signs



Crash Location #1: Kensington Connector

Post-Crash Interim Measures

- Add pavement markings
- New warning signs



Crash Location #1: Kensington Connector

Post-Crash Interim Measures

- Narrow travel lanes
- Add pavement markings
- New stop sign
- New warning signs



Crash Location #1: Kensington Connector

Post-Crash Interim Measures

- Narrow travel lanes
- Add pavement markings
- New stop sign
- New warning signs



Crash Location #1: Kensington Connector

Post-Crash Interim Measures

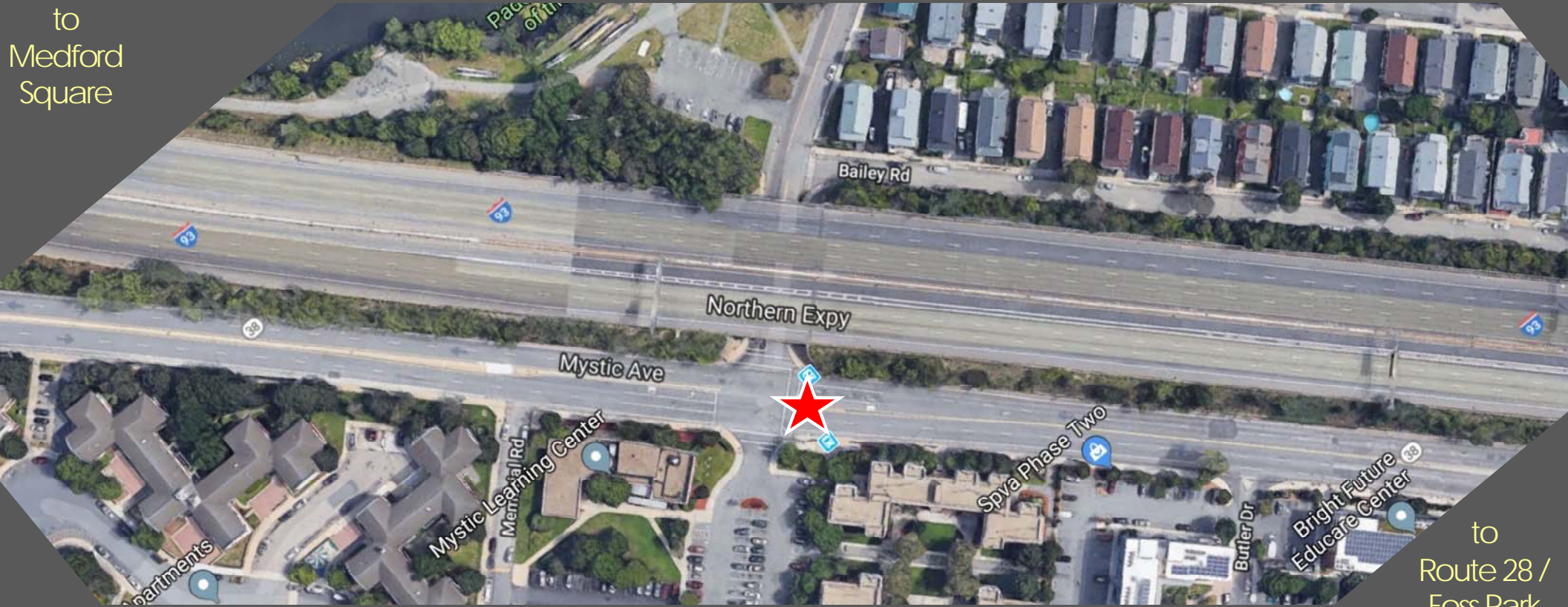
- Narrow travel lanes
- Add pavement markings
- New warning signs



Crash Location #2: Route 38 at Shore Drive

to Wellington Bridge

to
Medford
Square



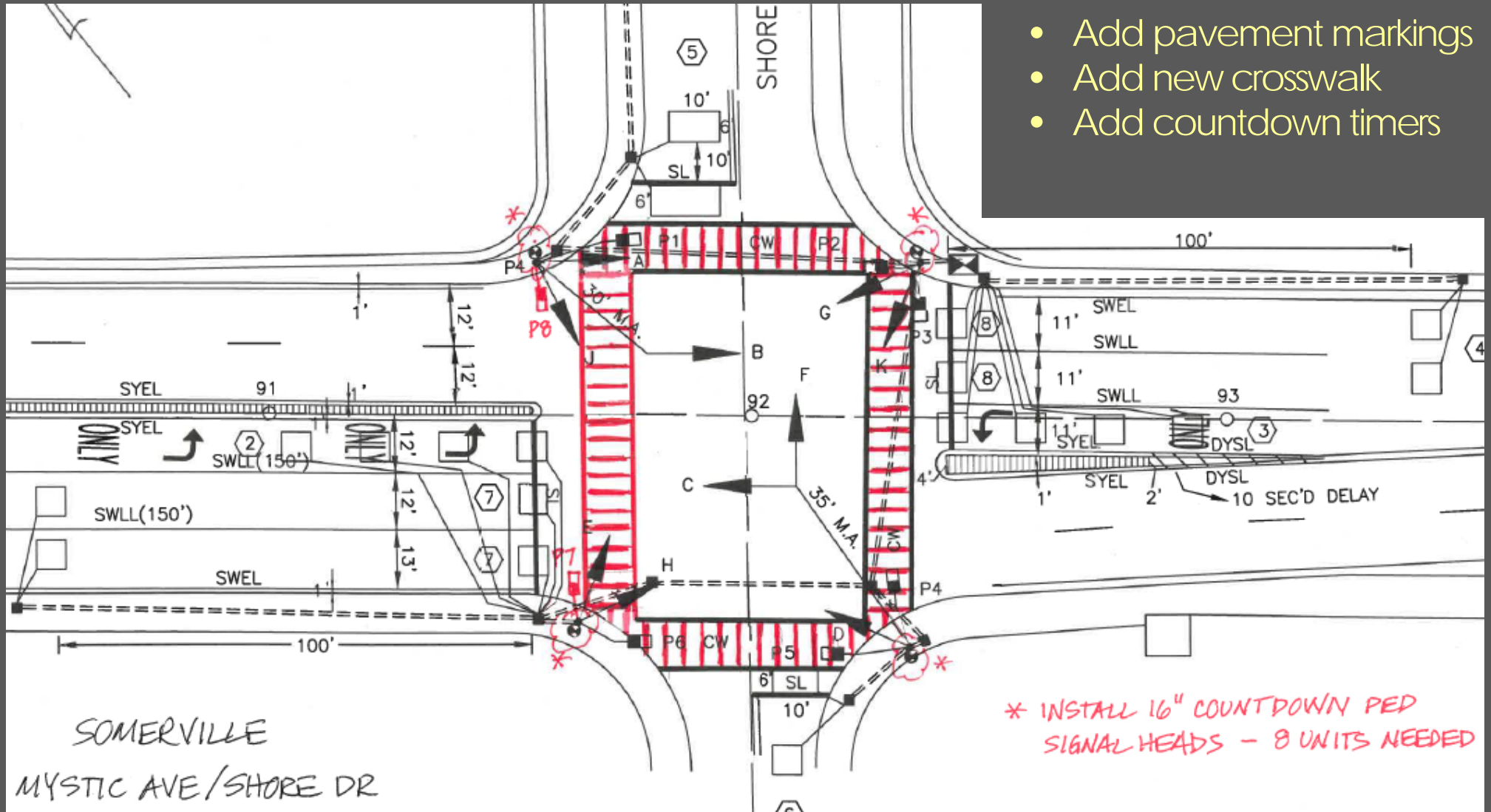
to
Route 28 /
Foss Park

to Healey School

Crash Location #2: Route 38 at Shore Drive

Post-Crash Interim Measures

- Add pavement markings
- Add new crosswalk
- Add countdown timers



* INSTALL 16" COUNTDOWN PED SIGNAL HEADS - 8 UNITS NEEDED

Crash Location #2: Route 38 at Shore Drive

Post-Crash Interim Measures

- Add pavement markings
- Add new crosswalk
- Add countdown timers



Crash Location #2: Route 38 at Shore Drive

Post-Crash Interim Measures

- Add pavement markings
- Add new crosswalk
- Add countdown timers



Crash Location #3: Medford at McGrath

to Highland Avenue

to
Union
Square



to
Lechmere

to Twin City Plaza

Crash Location #3: Medford at McGrath

Post-Crash Interim Measures

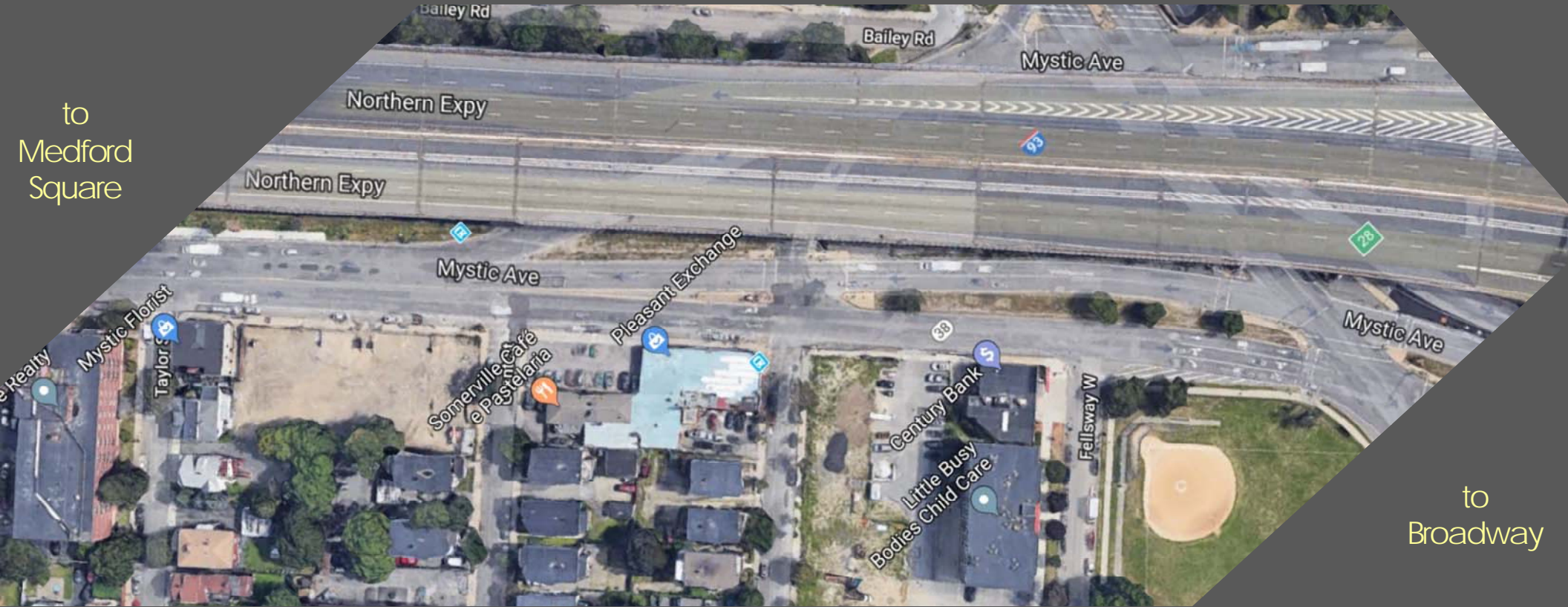
- Add pavement markings
- New "Yield to Pedestrians on Turns" sign.



Other Location of Concern: Route 38 at Wheatland

to Wellington

to
Medford
Square



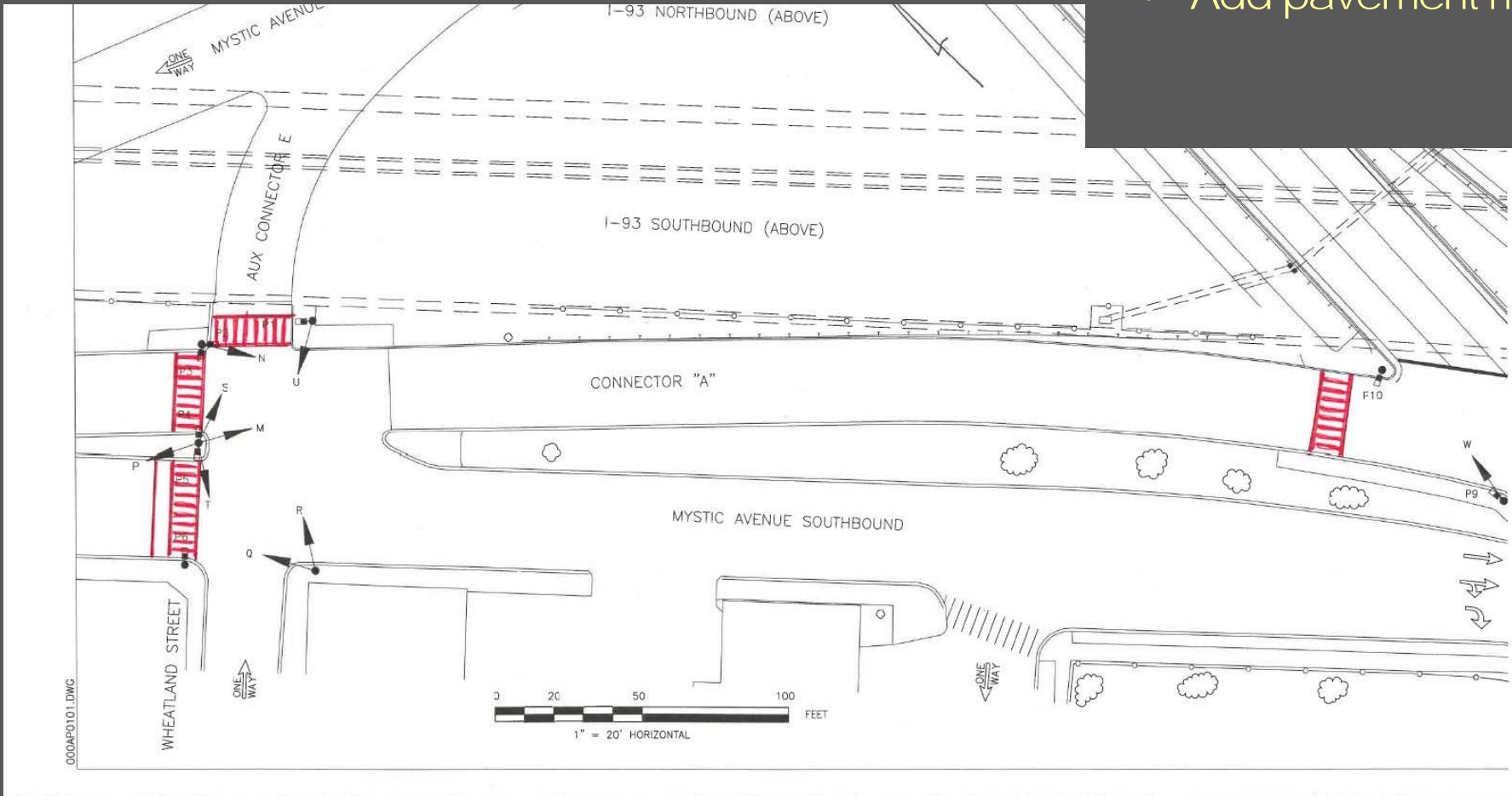
to
Broadway

to Winter Hill

Other Location of Concern: Route 38 at Wheatland

Interim Measures

- Add pavement markings



SOMERVILLE - MYSTIC AVE / WHEATLAND ST

Other Location of Concern: Route 38 at Wheatland

Interim Measures

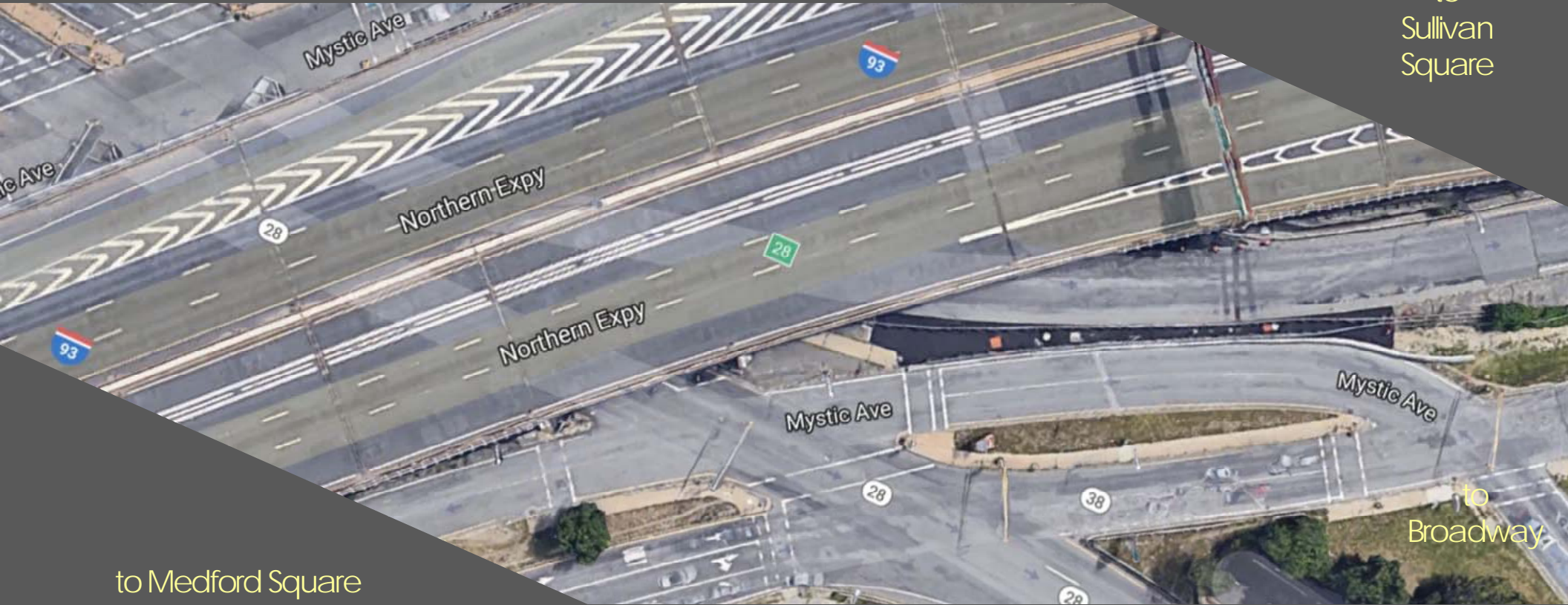
- Add pavement markings



Other Location of Concern: **Route 28 at Route 38**

to Wellington

to
Sullivan
Square



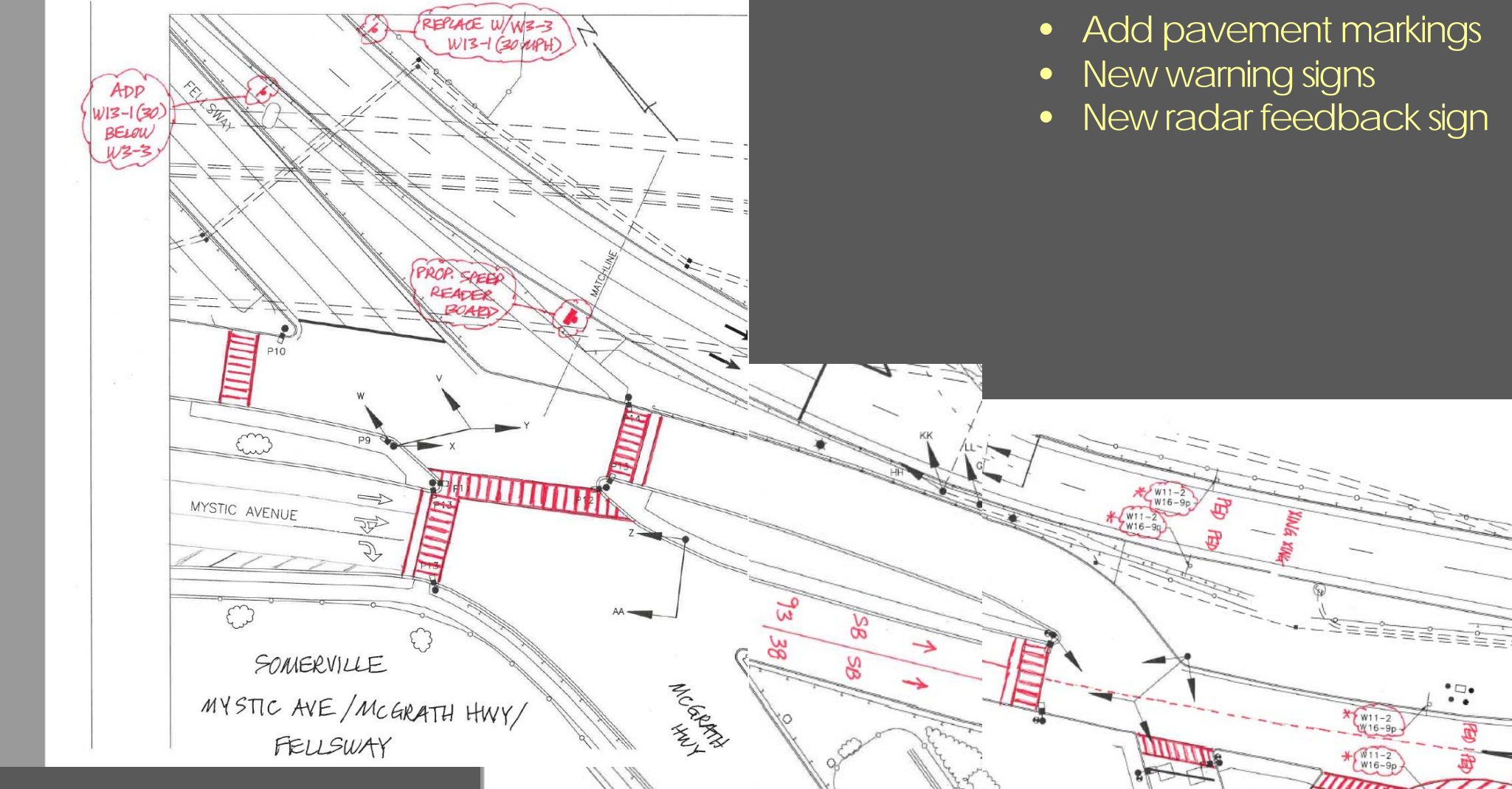
to Medford Square

to
Broadway

Other Location of Concern: Route 28 at Route 38

Interim Measures

- Add pavement markings
- New warning signs
- New radar feedback sign



Other Location of Concern: **Route 28 at Route 38**

Interim Measures

- Add pavement markings
- New warning signs
- New radar feedback sign



NEXT STEPS:

- MassDOT is scheduling contractors during Fall 2019 to perform the work described; some of this work is weather-dependent
- MassDOT is working in partnership with the City to schedule a public information meeting on the long-range construction project
- Massachusetts State Police are conducting crash investigations